

ALFA MARIO

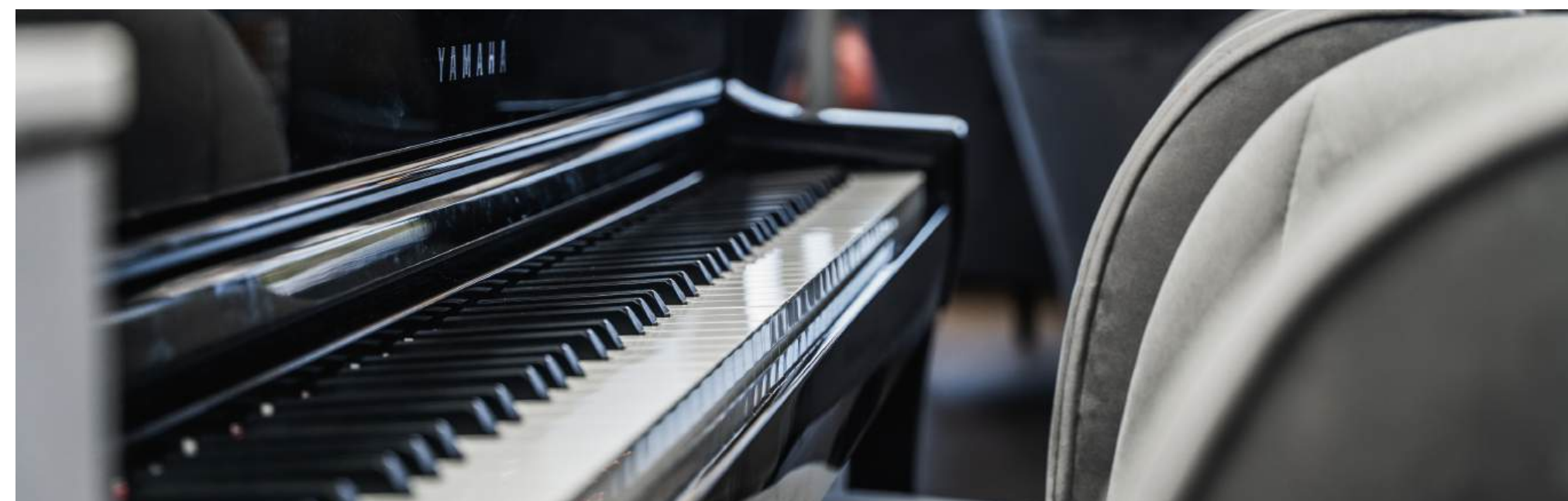
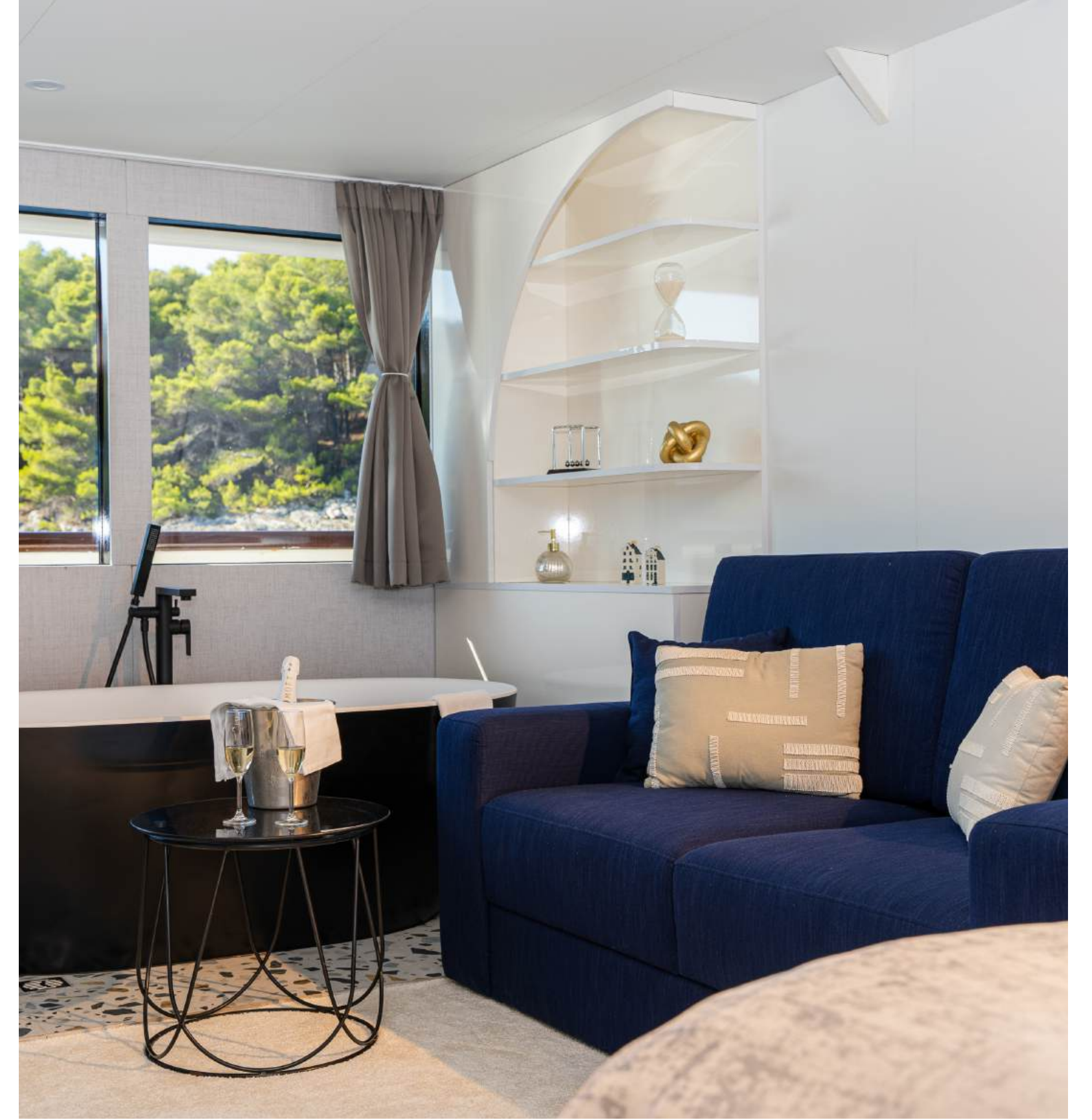


ALFA MARIO SEASON 2026

STUNNING SUPERSIZED

At 52 meters, Alfa Mario is one of the largest Croatian yachts of its type.
This 16-cabin stunner can accommodate up to 32 people, hosted by 12 crew.

LUXURY LIFESTYLE



Lounge & Recharge



DESTINATION

Croatia

43.8707° N

15.2324° E

Croatia is one of the most popular yachting destinations with many beautiful regions, historic towns, islands, and small villages.

The Exterior

M/Y Alfa Mario is the pride and joy of the Ercegovič family, shipbuilders with a long tradition and a numerous fleet under their belt.

The sundeck stands out with vast white lounging areas, a jacuzzi, outdoor gym, sauna and a huge shower, as well as the outdoor bar and BBQ.

She is ideal for large groups or families. Her clean lines, modern design, and amenities of a five-star hotel will leave you speechless.





The Interior

The indoor salon spans the entire length of the yacht featuring large windows, from which you can enjoy the passing scenery from every part of the room. Dining tables with velvet chairs and comfortable sofas throughout the salon provide the ultimate hang-out area. A fully stocked bar and a piano will make sure that you and your guests can have great fun also indoors.

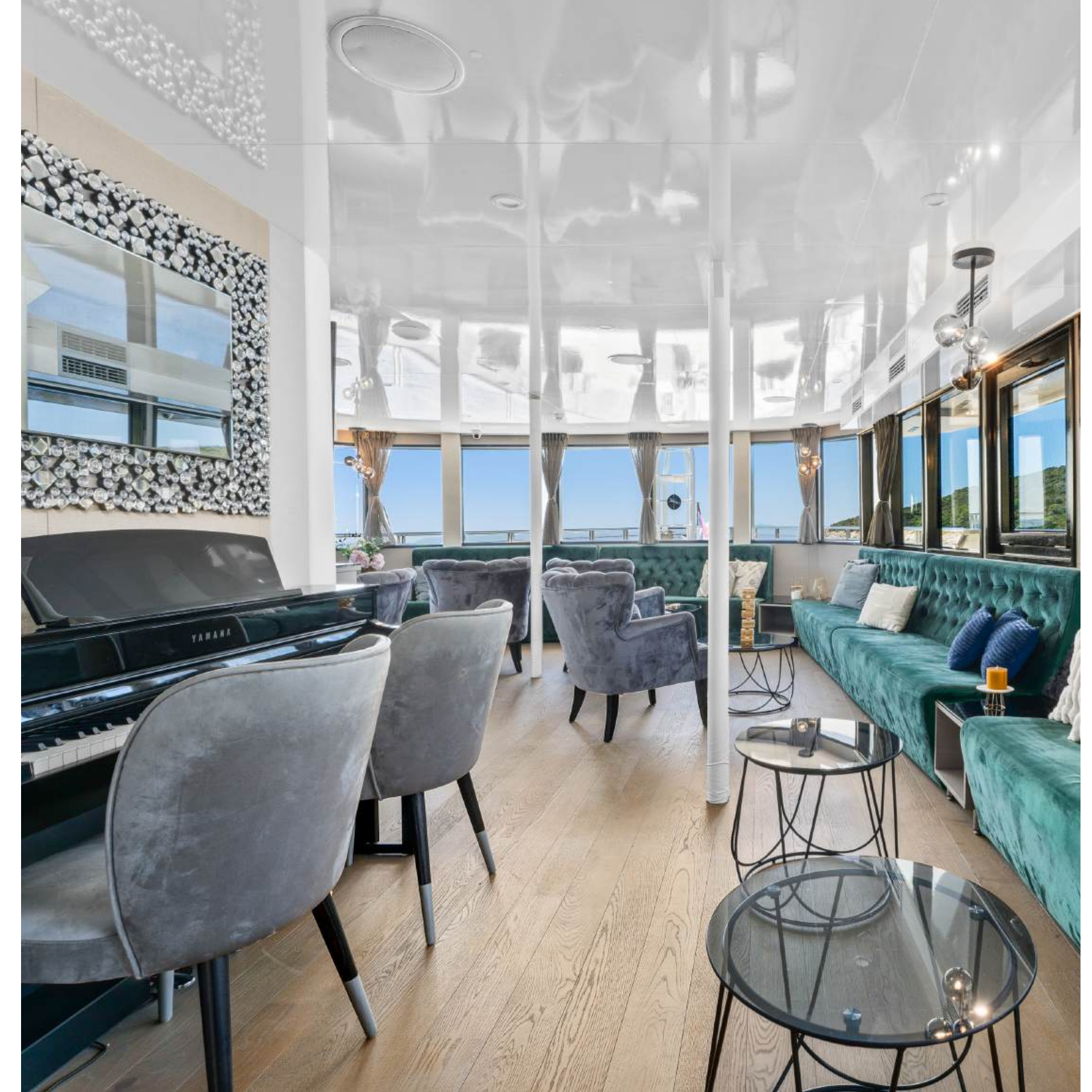


Yacht Amenities

You can enjoy the jacuzzi, sauna, and open gym on the sundeck.

To enjoy a relaxed vibe, there is a big lounge bar with a piano, and a well-stocked bar in the salon.

And don't miss the cinema with play station consoles below deck.



Ample variety of watersports

Alfa Mario carries all three of the most popular recreational watercraft aboard - jet ski, two e-foils, and two sea bobs. In addition, there are two kayaks, paddleboards, a ringo ride, water skis, and of course plenty of "floaties" and snorkelling sets.



Specifications

Length

52 m
(170' 7")

Beam

8.6 m
(28' 2")

Draft

2.5 m
(8' 2")

Cruise speed

9 knots

Cabins / Guests

16 32

Built / Renovated

2021/ 2024

Water Sports

Jet ski, 2 SeaBobs,
2 E-Foils, Ringo ride,
2 Paddleboards, 2 Kayaks, Water
Skiis, Floating Platforms

Crew Description

12 crew members

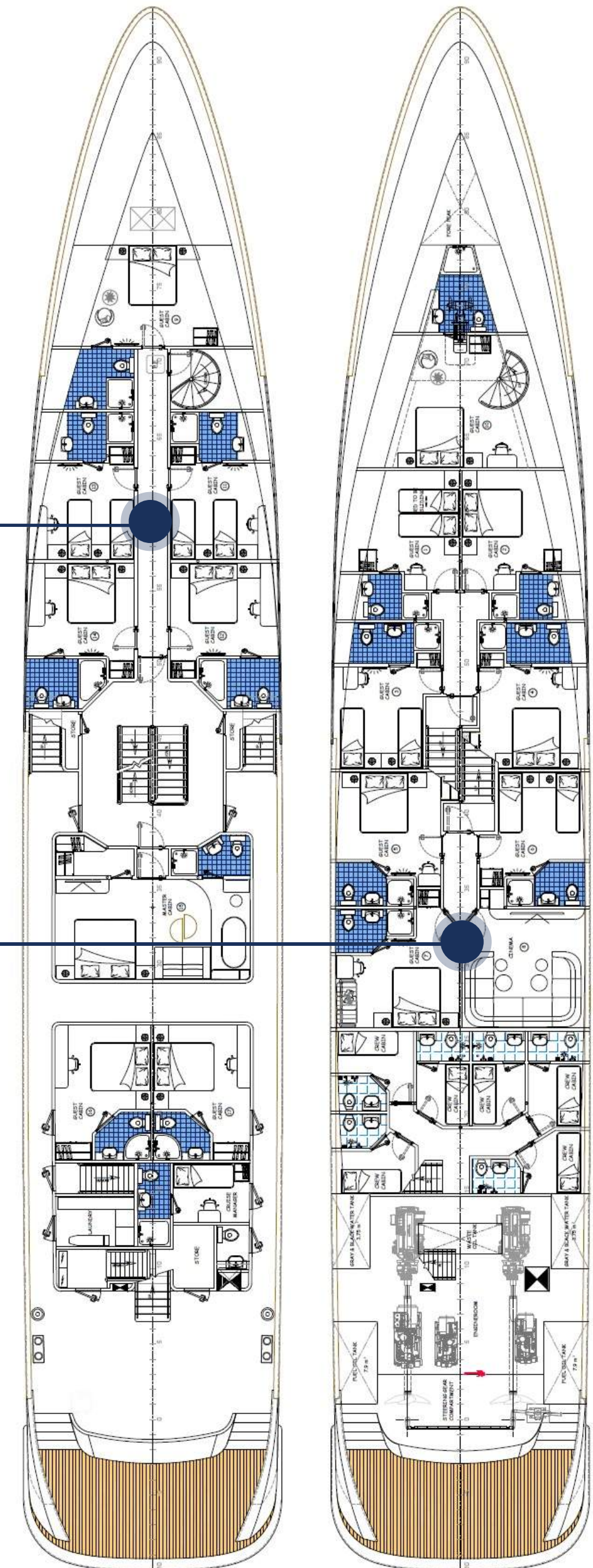
Cabin Description

MAIN DECK

- Master cabin with a double bed. Private bathroom with shower box and home-type toilet.
- 4 Double cabins with a double bed. Private bathroom with shower box and home-type toilet.
- 2 Convertible cabins (twin or double). Private bathroom with shower box and home-type toilet.

LOWER DECK

- 6 Double cabins with double beds. Private bathroom with shower box and home-type toilet.
- 3 Convertible cabins (twin or double). Private bathroom with shower box and home-type toilet.



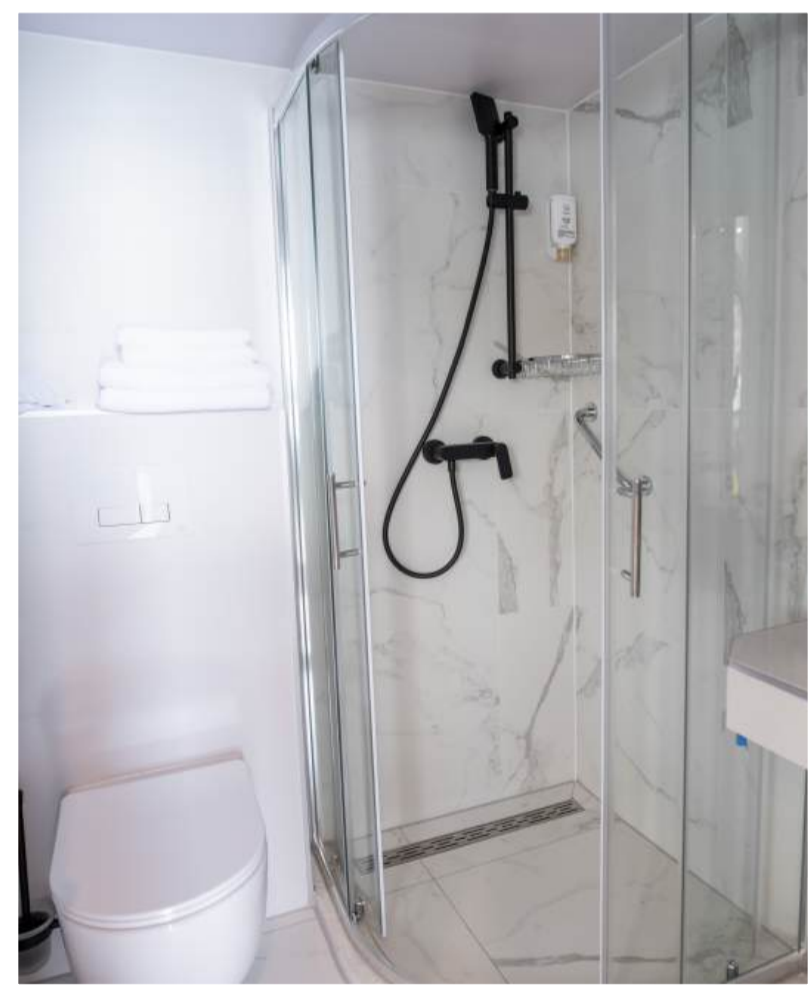
Cabin Details



MASTER CABIN



TWIN CABIN



DOUBLE CABIN





[Click for video](#) 

Space & Elegance

PRICES PER WEEK

SEASON A

From 31 May 2026
till 15 June 2026

€110,000

+ A.P.A. + VAT

SEASON B

From 16 June 2026
till 3 September 2026

€120,000

+ A.P.A. + VAT

SEASON C

From 4 September 2026
till 27 September 2026

€110,000

+ A.P.A. + VAT

INCLUDED

Agency Support: guidance through the booking procedure, paperwork, preparation for the cruise, food, drinks, and route organization, during the cruise support, assistance in case of emergency. Entire support before and during the cruise.

Shipboard accommodation: maximum number of 32 guests sleeping in 16 cabins.

Crew: 12 crew members **Fuel for cruising:** 4 hours/day

Linen: bed sheets, bathroom, and beach towels.

Air conditioning: unlimited hours/day.

Wi-Fi: unlimited

EXTRA PAYMENTS

Mandatory extras

A.P.A. (Advance Provisioning Allowance)

30% of the charter price: To cover the following costs, but not limited to: fuel for tender and water sports equipment; additional fuel for cruising (above 4 h per day), food and beverages for the Charter Party; berthing dues and other harbor charges including pilots 'fees, local taxes, divers' fees, customs formalities, charges for waste disposal, charges for water and electricity taken from shore; shipping agents' fees where applicable; Charter Party personal laundry; hire or purchase costs of any special equipment placed on board at the Charterer's request, shoreside transport and excursions, national park entrances and other costs for services requested by Charter Party during the charter and all other costs not specified as included. A.P.A is paid by the Client in addition to the charter fee for all relevant costs for the vessel that are not included in the charter fee. If A.P.A does not cover complete costs, the Client will pay exceeding the amount on board in cash. If costs made on charter are less than the amount given as A.P.A, the amount that was not spent will be returned to the Client at the end of the voyage. A.P.A. does not include a tip for the crew.

VAT: 13% extra on top of the Charter Rate.

Non-Mandatory extras

TIPS: Tips are not included in the price of the charter and are a voluntary way of showing appreciation for a good service. Usually it is 10% to 15% of the charter price, according to your satisfaction, paid to the captain at the end of the charter and distributed equally by the captain to the rest of the crew.

Delivery/Re-delivery Fee: Dubrovnik - 2,000 € fixed cost (in case of empty leg caused by (dis)embarkation outside home port)

Alfa Mario

Disclaimer: This document is for informational purposes only and is not contractual. While we strive for accuracy, the publisher makes no warranties regarding the completeness or usefulness of the information and images provided. Yacht inventory, specifications, prices, etc., may change without notice. Reproduction of any text or images from this document requires written consent from the publisher.